



GAT MONTHLY MEMBERSHIP PROGRESS REPORT

Results as of: 3/31/2024

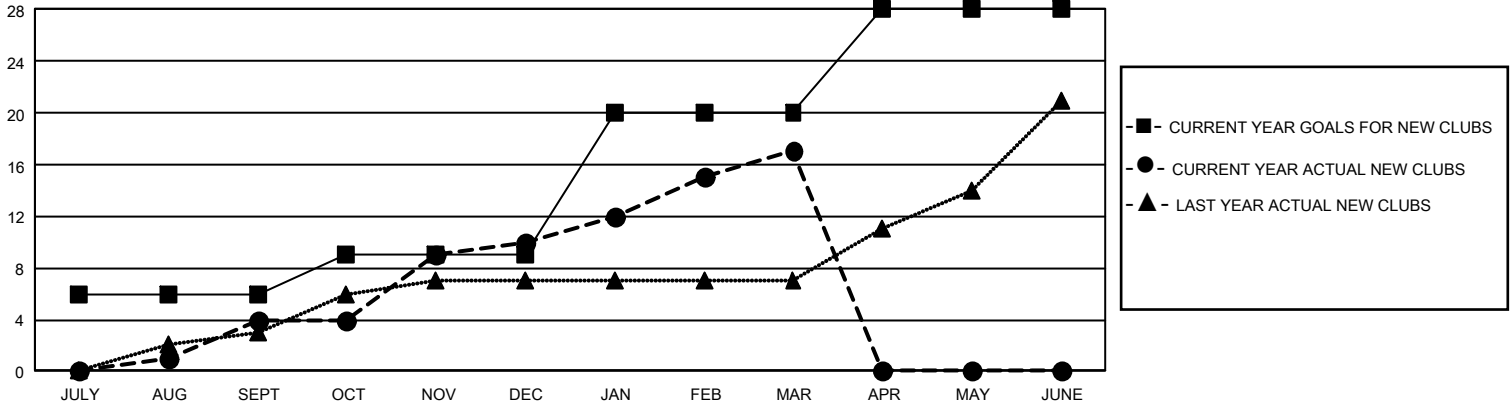
GMT Constitutional Area 3, Group D

REPORT DOES NOT INCLUDE CLUBS IN UNDISTRICTED AREAS.

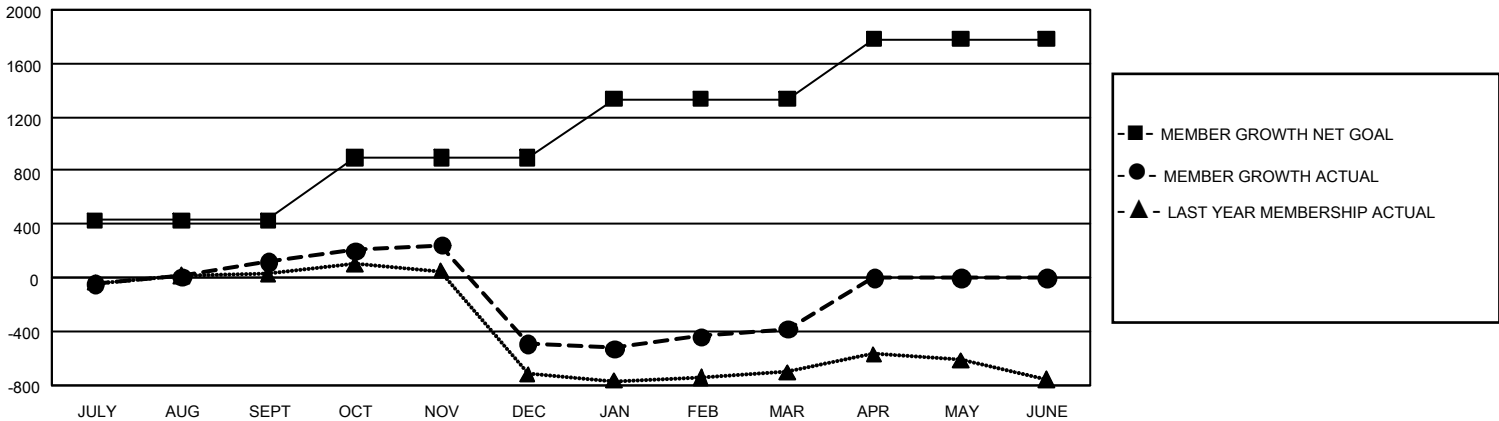
Clubs			
RESULTS FOR 2023-2024			
QUARTER	NEW CLUB GOAL	NEW CLUBS	DROPPED CLUBS
JULY/AUG/SEPT	18	4	5
OCT/NOV/DEC	9	6	7
JAN/FEB/MAR	33	7	8
APR/MAY/JUNE	24	0	0

Members			
RESULTS FOR 2023-2024			
QUARTER	MEMBER GROWTH NET GOAL	MEMBER GROWTH ACTUAL	DROPPED MEMBERS ACTUAL (including transfers)
JULY/AUG/SEPT	429	626	431
OCT/NOV/DEC	469	634	1,187
JAN/FEB/MAR	437	563	348
APR/MAY/JUNE	445	0	0

GOALS AND ACTUAL NEW CLUBS CUMULATIVE



GOALS AND ACTUAL MEMBERS CUMULATIVE



DROPPED CLUBS: 20 DROPPED MEMBERS DECEASED 79 CLUB CANCELLED 225 OTHER 1,662 TOTAL 1,966	397 CLUBS OF 775 ADDED 1 OR MORE NEW MEMBERS	GENDER DISTRIBUTION MALE 6,818 (45.97%) FEMALE 8,012 (54.02%) NON BINARY 0 (0.00%) PREFER NOT TO ANSWER 1 (0.01%)
	CLICK HERE FOR CUMULATIVE MEMBERSHIP DATA	TOTAL FAMILY UNIT MEMBERS 5,023 FAMILY MEMBERS PAYING HALF DUES 2,854